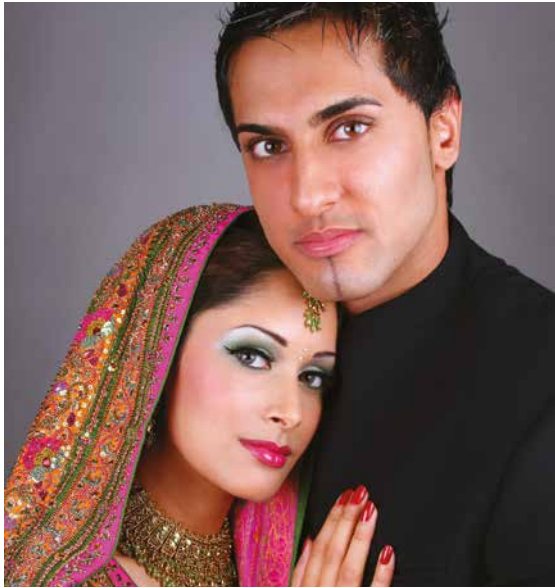


Capacities



Kings Hall

This magnificent ballroom with its huge chandeliers and marble fireplaces offers a unique backdrop for your special day. The Kings Hall is ideal for weddings and ceremonies of 200 guests and upwards, plus you have the fantastic Balcony, which can add an additional 40 to the final numbers.

Room Layout	Capacity
Mandap	350 (subject to set up)
Dinner/Dance	260 / 300 with the Balcony
Dinner Only	300 / 340 with the Balcony

Queens Hall

A stylish completely self-contained suite with its own private foyer and dance floor. Our most popular size room for weddings or ceremonies with 200 guests or less.

Room Layout	Capacity
Civil Ceremony	200
Dinner/Dance	170
Dinner Only	200

Not enough room?

Why not consider using the Kings and Queens together. Located next door to each other, we can look at ways to accommodate your guests in both of our fantastic rooms. For more information on this call our dedicated wedding co-ordinator.



Ceremonies

The Mercure Leicester, The Grand Hotel is a fully licensed establishment for the solemnisation of marriage and civil partnerships. You have a choice of rooms in which to say your vows. The Cromwell and Empress rooms are both elegant settings with original Victorian wood panelling and large fireplaces.

Room	Max. Number	Hire Price
Cromwell Room	60	£500
Empress Room	70	£500
Queens Hall	200	£700

Contact details

You will need to contact the Registrar's office to arrange the provisional booking of your date. Contact can be made up to one year in advance. Please note you will need to pay the Registrar's fee directly as we are unable to arrange this on your behalf.

Registrar's office tel: **0116 454 1000**

